



SPACE KRAFT

Mobile storage systems (mobile aisle shelving or roller racking) are moveable filing cabinets mounted on a track way. These specialized office furniture units are usually constructed with a rotary handle on the exterior accessible face. When revolved, the handle operates the mechanism which winds the single, connected, filling unit either left or right, depending on a clockwise or counter clockwise rotation of the handle.

By eliminating the need for an aisle between every shelving unit, more floor space can be utilized for storage. The tracks are leveled to eliminate gradients in the supporting floor. This makes it possible to move heavy units with minimal effort.

Mobile Racking System



TROLLEYS



MEZZANINE FLOOR
SHELVING SYSTEM

LONG SPAN
SHELVING SYSTEM

SHELVING
SYSTEM WITH
CONVEYOR

Color Code	
	- Uprights, Bracers,
	- Beam,
	- Uprights, Bracers, Floor Grating
	- Beams, Column Gaurd, Side Safety Barrier
	- Shelvings Panels

SPACE KRAFT

STORAGE AND MATERIAL HANDLING SYSTEMS

737, 2nd Floor, 1st Main Road, 2nd Phase, 7th Block
Banashankari 3rd Stage, Bangalore - 560 085
E-mail: spacekraft@hotmail.com
Ph : +91(80) 2679 2805
Mob : +91 98451 18820 / 96862 99997

SPACEKRAFT STORAGE SYSTEMS

Redefined Storage Solutions

SPACE KRAFT

Which Storage Solutions fits you best?

That really depends on what you're storing, how much you're storing, and how often you want to access it. Space Kraft can assist you specifying the kind of storage rack with solution that will give you the best service for your application.



SPACEKRAFT STORAGE AND MATERIAL HANDLING SYSTEMS

SPACE KRAFT

SPACE KRAFT

SPACE KRAFT

We are one of the premier manufacturer and storage solution provider with experienced engineers and comprehensive quality products with wide range of systems. All the components are manufactured from the finest quality of steel.

Adhering to code of standards.

Our Range of Systems are :

- Selective Pallet Racking System
- Long Span /bulk Racking System
- Slotted Angle Racking System
- Drive-in/Drive – through Racking System.
- Pushback Racking System.
- Roll Out Racking System .
- Gravity Flow Racking System.
- Mezzanine Floor
- Multitier Racking System
- Mobile Racking System.
- Cantlever Racking System
- Trolleys
- Safety Gates
- Steel Pallet / Cage Pallet
- Rack Accessories

Selective Pallet Racking System

Selective Pallet Rack is a single or multi-level structural storage system that is utilized to support high stacking of single items or palletized loads, Pallet racks are an essential and omnipresent element in most modern warehouses, manufacturing facilities, retail centers, and other storage and distribution facilities.

When you need warehouse storage, consider pallet rack as a flexible and cost effective solution.

This versatile choice provides 100% selectivity to every load. You can always access every pallet. However, they require numerous aisles and result in lower storage density than some other alternatives. For faster moving product, and the best access, selective racks are the system of choice.

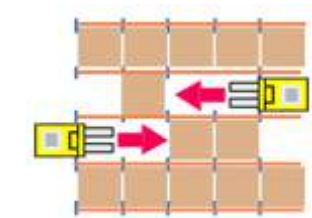


RACKING SYSTEM WITH ACCESSORIES

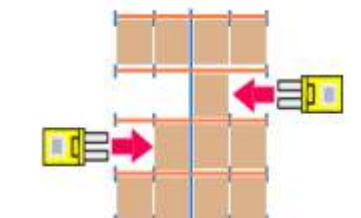


- Common components of selective rack include the following:
- Load beams
 - Upright Frames
 - Diagonal Bracers and Horizontal Bracers
 - Pallet Supports
 - Wire Decking
 - Footplates
 - Shims
- Rack Accessories
- Row spacers
 - Wall ties
 - Column protectors
 - Pallet support runner
 - Pallet back stopper
 - Drop-in decking panels
 - Drop-in skids
 - Drum support
 - Wire Mesh decking

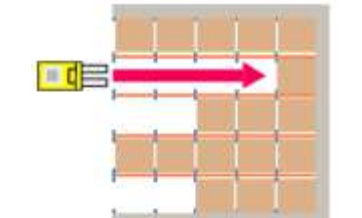
Drive-in Racks



Drive- through racks



Drive- in racks Double side Entry



Drive- in racks – single Side Entry

Drive-in / Drive-Through Racks allow a lift truck to enter the rack from either side to pick up or pull out pallets. Loads are supported by rails attached to upright frames, and lift trucks are driven between uprights to reach pallets. This is done because pallets can slide backwards on a continuous rail. It's open at both ends, allowing first-in, first-out storage. Drive-Through Racks offer the ability to store a large amount of similar loads in a smaller area.

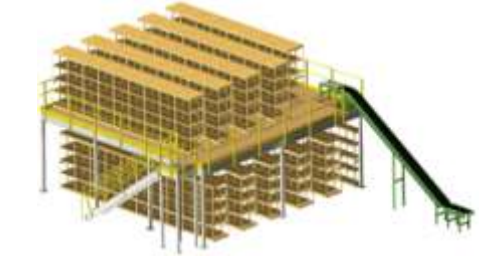


- Fast, easy assembly
- Ideal for record storage, retail and grocery applications
- Ideal for medium case and piece pick applications
- Great for hand stacking operations

Shelving Systems

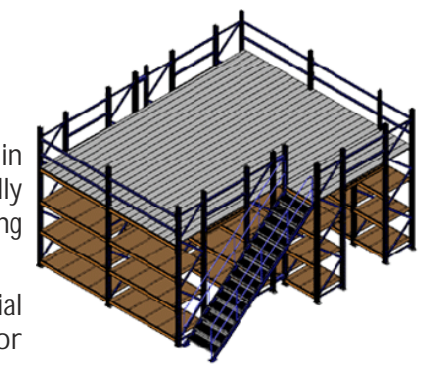
Mezzanine Floor

Mezzanine floor systems are semi-permanent floor systems typically installed within buildings, built between two permanent original stories. These structures are usually free standing and in most cases can be dismantled and relocated. The decking or flooring of a mezzanine will vary by application.



Multitier Racking System

Mezzanines are frequently used in industrial operations such as warehousing, distribution or manufacturing. These facilities have high ceilings, allowing unused space to be utilized within the vertical cube. Industrial mezzanine structures are typically either structural, rack-supported, or shelf-supported, allowing high density storage within the mezzanine structure



Rack Supported Mezzanine Floor

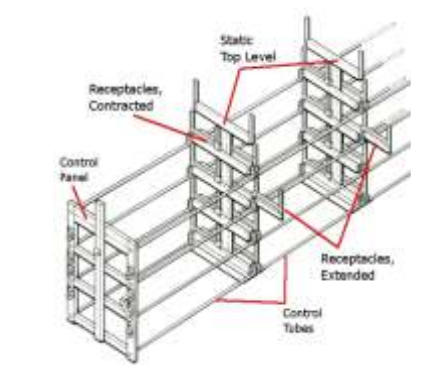


Mezzanine Floor

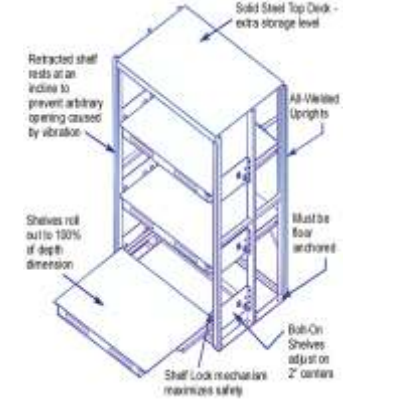
Push Back Racks

Pallets are placed by forklift on nested carts riding on inclined rails. Each pallet is then pushed back by subsequent pallet loading, exposing the next cart. When removing product, the forklift takes out the front pallet, allowing the pallets on carts behind it to roll gently to the front of the rack. The nested carts make placement and retrieval easy.

Roll Out –Tube / pipe Racks

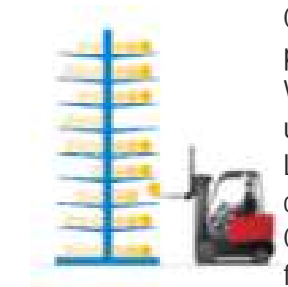


ROLL OUT Racking systems combine storage density with selectivity for stock, tubing, or pipe storage Die Storage applications. It can store your metal stock in roll-out drawers that provide 100% access to overhead cranes. These racks organize the storage area for better inventory control as well as make it easier and faster to locate an item.



Roll out – Die racks

Cantilever racking systems



Cantilever racks are ideal for storing long, unwieldy items. Each kind of rack provides a wide range of flexibility and add-on capability. With no front column in the way, cantilever racks are faster to load and unload, lowering handling time and costs.

Loads may be placed anywhere along the entire length of a row on a cantilever rack. Cantilever racks can store nearly any type of load. They are especially useful for storing long, bulky, or oddly-shaped loads.



Steel Pallet / Steel cage Pallet

